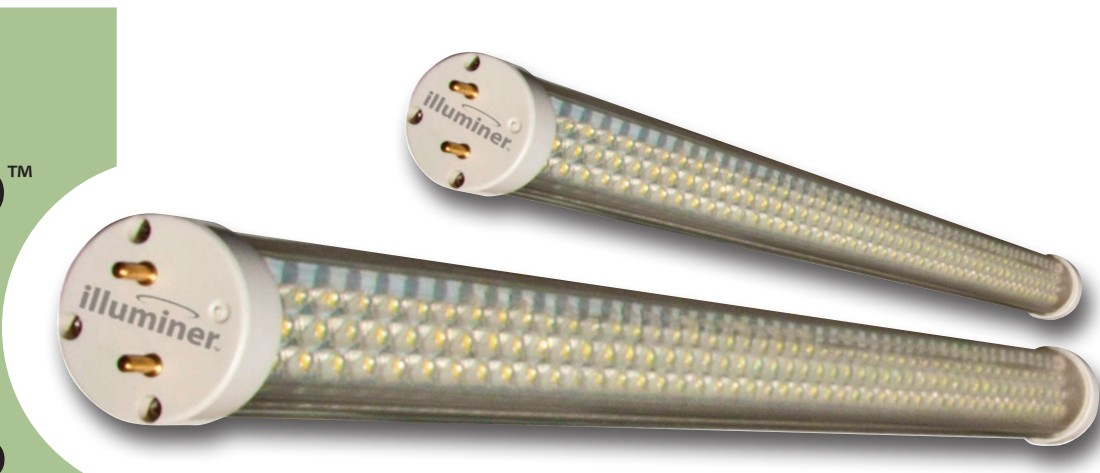


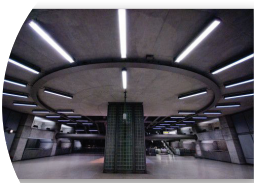
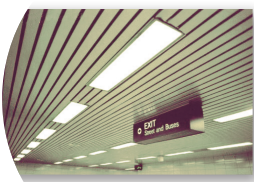
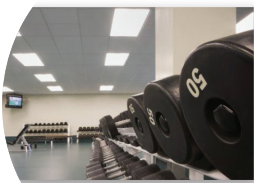
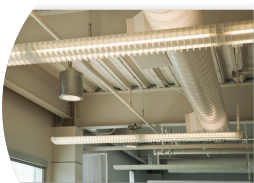
IlluminerLED™ T8 Utility Dimmable Indoor Lamp



IlluminerLED replacement lamps deliver unprecedented value, performance & savings, without guilt or compromise.

- Consumes up to **50% less energy**, with high efficacy & longer usable life than comparable 28-32w 4ft fluorescents.⁵
- **Bright & Even** light that is **dimmmable** with most controls. **Instant** on/off – **no delays, flicker or buzz**
- **Easily retrofit** existing conventional fixtures, simplifies troffers – no ballasts needed
- **Safe – free of hazardous lead, mercury & fragile glass**, no damaging UV light, infrared radiation or CO2 emissions
- **Unlimited** indoor applications for overhead illumination, retail fixtures, signage & accents – 2ft-4ft-6ft lengths available

... ask about our new **Cold&Damp Location model** for refrigerated environments



High-integrity “industrial grade” lamps that are built to last...

High Efficacy & Long Life

Quality Materials for Optimal Performance

Standardized Formats & “Smart” Features

Environmentally Responsible & Safe 

Line Voltage	120v	277v
Wattage	18.5w	17w
Lumens	1200	1300
Efficacy (LM/W)	65	76
Hours	60,000	
Color Accuracy (CRI)	SW & WW ≥ 80 PW ≥ 75	
Color Options (CCT)	Warm White (3000K) Soft White (4200K) Pure White (5700K)	
LEDs	288	300
Certifications	UL Listing: #IEUQ.E342045	
Warranty	3 Years	

High impact LED lighting that is low impact on resources.™

888.828.5858 | sales@illuminerinc.com | www.illuminerinc.com

illuminer™

Ordering & Specifications¹

IlluminerLED™ Utility T8 Dimmable Indoor LED Lamps

Model Number	Description	Length	Watts	Approx. Lumens ²	Efficacy (LPW)	Color Temp (Kelvin)	CRI	Beam	Lens	Life ³ (hours)	LEDs	Base	Case Qty	Case Weight (lbs.)	Case Cube (cu. ft.)	Pallet Qty	Unit (WxDxH")	Case (WxDxH")	Pallet (WxDxH")	
IlluminerLED™ T8 Utility — 120 Line Voltage																				
LT8U-4-120V-WW	IlluminerLED T8 Utility, 4ft, 120v, warm white	48"	18.5	1100	61	3000K (warm white)	80	110°	clear	60,000	288	Bi-Pin (G13)	12	18	0.9	1092	48x1x1	50x6x5	51x51x75	
LT8U-4-120V-SW	IlluminerLED T8 Utility, 4ft, 120v, soft white	48"	18.5	1200	65	4200K (soft white)	80	110°	clear	60,000	288	Bi-Pin (G13)	12	18	0.9	1092	48x1x1	50x6x5	51x51x75	
LT8U-4-120V-PW	IlluminerLED T8 Utility, 4ft, 120v, pure white	48"	18.5	1250	69	5700K (pure white)	75	110°	clear	60,000	288	Bi-Pin (G13)	12	18	0.9	1092	48x1x1	50x6x5	51x51x75	
LT8U-2-120V-WW	IlluminerLED T8 Utility, 2ft, 120v, warm white	24"	9	600	67	3000K (warm white)	80	110°	clear	60,000	144	Bi-Pin (G13)	12	10	0.5	2184	24x1x1	26x6x5	53x53x75	
LT8U-2-120V-SW	IlluminerLED T8 Utility, 2ft, 120v, soft white	24"	9	650	72	4200K (soft white)	80	110°	clear	60,000	144	Bi-Pin (G13)	12	10	0.5	2184	24x1x1	26x6x5	53x53x75	
LT8U-2-120V-PW	IlluminerLED T8 Utility, 2ft, 120v, pure white	24"	9	675	75	5700K (pure white)	75	110°	clear	60,000	144	Bi-Pin (G13)	12	10	0.5	2184	24x1x1	26x6x5	53x53x75	
IlluminerLED™ T8 Utility — 277 Line Voltage																				
LT8U-4-277V-WW	IlluminerLED T8 Utility, 4ft, 277v, warm white	48"	17	1150	68	3000K (warm white)	80	110°	clear	60,000	300	Bi-Pin (G13)	12	18	0.9	1092	48x1x1	50x6x5	51x51x75	
LT8U-4-277V-SW	IlluminerLED T8 Utility, 4ft, 277v, soft white	48"	17	1300	76	4200K (soft white)	80	110°	clear	60,000	300	Bi-Pin (G13)	12	18	0.9	1092	48x1x1	50x6x5	51x51x75	
LT8U-4-277V-PW	IlluminerLED T8 Utility, 4ft, 277v, pure white	48"	17	1350	79	5700K (pure white)	75	110°	clear	60,000	300	Bi-Pin (G13)	12	18	0.9	1092	48x1x1	50x6x5	51x51x75	
LT8U-2-277V-WW	IlluminerLED T8 Utility, 2ft, 277v, warm white	24"	10	650	65	3000K (warm white)	80	110°	clear	60,000	192	Bi-Pin (G13)	12	10	0.5	2184	24x1x1	26x6x5	53x53x75	
LT8U-2-277V-SW	IlluminerLED T8 Utility, 2ft, 277v, soft white	24"	10	750	75	4200K (soft white)	80	110°	clear	60,000	192	Bi-Pin (G13)	12	10	0.5	2184	24x1x1	26x6x5	53x53x75	
LT8U-2-277V-PW	IlluminerLED T8 Utility, 2ft, 277v, pure white	24"	10	775	78	5700K (pure white)	75	110°	clear	60,000	192	Bi-Pin (G13)	12	10	0.5	2184	24x1x1	26x6x5	53x53x75	

All IlluminerLED™ T8 lamps are available in 6-foot lengths as well, please contact us for specs and ordering info.

Energy Efficiency

Replacing 100 fluorescent lamps with IlluminerLED™ Utility T8's can save you up to \$715 each year; and your new LED lighting lasts longer and emits less heat, which can reduce maintenance and HVAC costs as well (not calculated here).

Lighting Cost Comparison	IlluminerLED™ LT8U-4-277V-PW	Traditional Fluorescent T8	Estimated Savings ⁷
Watts in fixture (rated watts) ⁴	17 (17)	32 (28)	20 (15)
x 12 Operating hours / day, ÷ 1000	75 kWh / year	140 kWh / year	65 kWh / year
x \$0.11/kWh rate ⁵	\$8.25 / year	\$15.40 / year	\$7.15 / year
x 100 Lamps	\$825 energy / year	\$1,540 energy / year	\$715 energy / year

1) All specifications are subject to change without notice, may vary +/- 10%; please confirm with order. 2) Measured through photometric testing consistent with IES LM-79. 3) Rated usable life is operational hours at which 70% of lumens remain; based on testing and probability; based on usage <12 hours/day. 4) System watts assumes a ballast factor of .85 efficiency. 5) Your energy savings may vary depending on energy rates in your region. 6) Does not account for gradual increases in electricity and labor costs over time; ballast replacements and hazardous waste disposal of fluorescents that will further increase savings.

©2011 Illuminer, Inc. All rights reserved. Printed in U.S.A.

Shipping

There may be minimum orders; delivery times may vary by specifications and inventory; please confirm with order. FOB Los Angeles, typically up to 45 days. Some stock in our CA warehouse; can ship within 24 hours (call for availability).

Warranty

Illuminer, Inc. offers a limited 3-year warranty for its LED lamps against defects in material or workmanship from date of original purchase. For complete details: www.illuminerinc.com/illuminerLEDwarranty.pdf

The U.S. Department of Energy's Lighting Facts® Program has verified product performance based on industry-standardized testing. For details, see IlluminerLED models at: www.lightingfacts.com/products



NOTES: Light output from LEDs are highly directional/concentrated, which are often more effective at lighting surfaces than omni-directional fluorescents and tungsten technologies. This device complies with Part 18 of the FCC rule. This product may cause interferences with other devices. If interference occurs, change the location of the products involved. IMPORTANT: Ballasts in fixtures need to be bypassed for LED T8 tubes to operate properly and efficiently.

WARNINGS & CAUTIONS: Insert into fluorescent fixtures only. Not for use with ballast. Use indoors in dry locations only (0°-120°F), <12 hours/day. Risk of electric shock. Do not use in sealed fixtures. Turn off power before changing lamp.